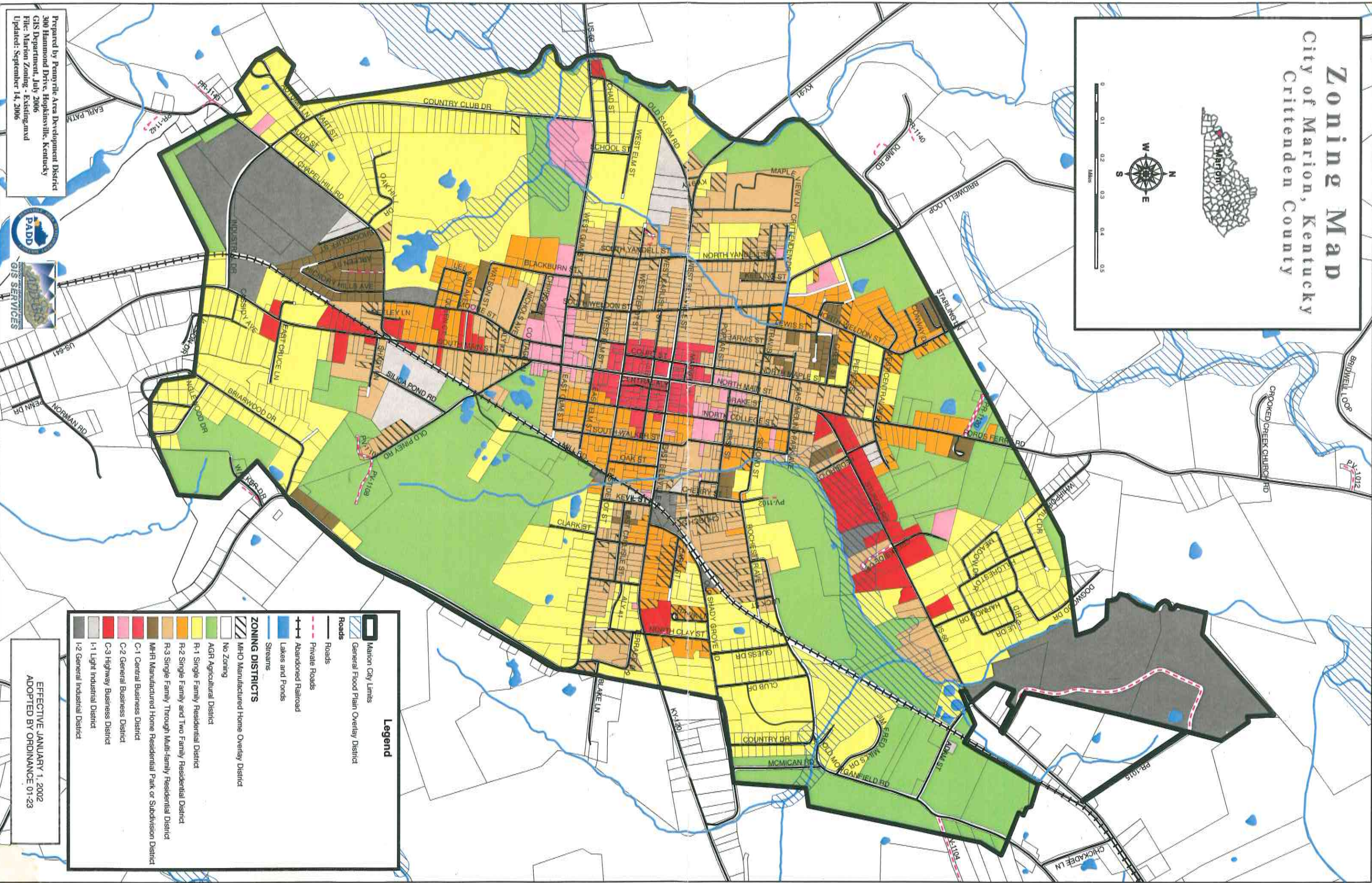
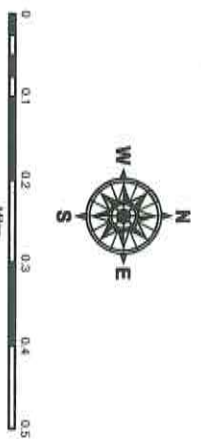


Zoning Map

City of Marion, Kentucky

Crittenden County



Prepared by Pennyrile Area Development District
 300 Hammond Drive, Hopkinsville, Kentucky
 GIS Department, July 2006
 File: Marion Zoning - Existing.mxd
 Updated: September 14, 2006



Legend

- Marion City Limits
- General Flood Plain Overlay District
- Roads**
- Roads
- Private Roads
- Abandoned Railroad
- Lakes and Ponds
- Streams
- ZONING DISTRICTS**
- No Zoning
- MHO Manufactured Home Overlay District
- AGR Agricultural District
- R-1 Single Family Residential District
- R-2 Single Family and Two Family Residential District
- R-3 Single Family Through Multi-family Residential District
- MHR Manufactured Home Residential Park or Subdivision District
- C-1 Central Business District
- C-2 General Business District
- C-3 Highway Business District
- I-1 Light Industrial District
- I-2 General Industrial District

EFFECTIVE JANUARY 1, 2002
 ADOPTED BY ORDINANCE 01-23